



Children's National®

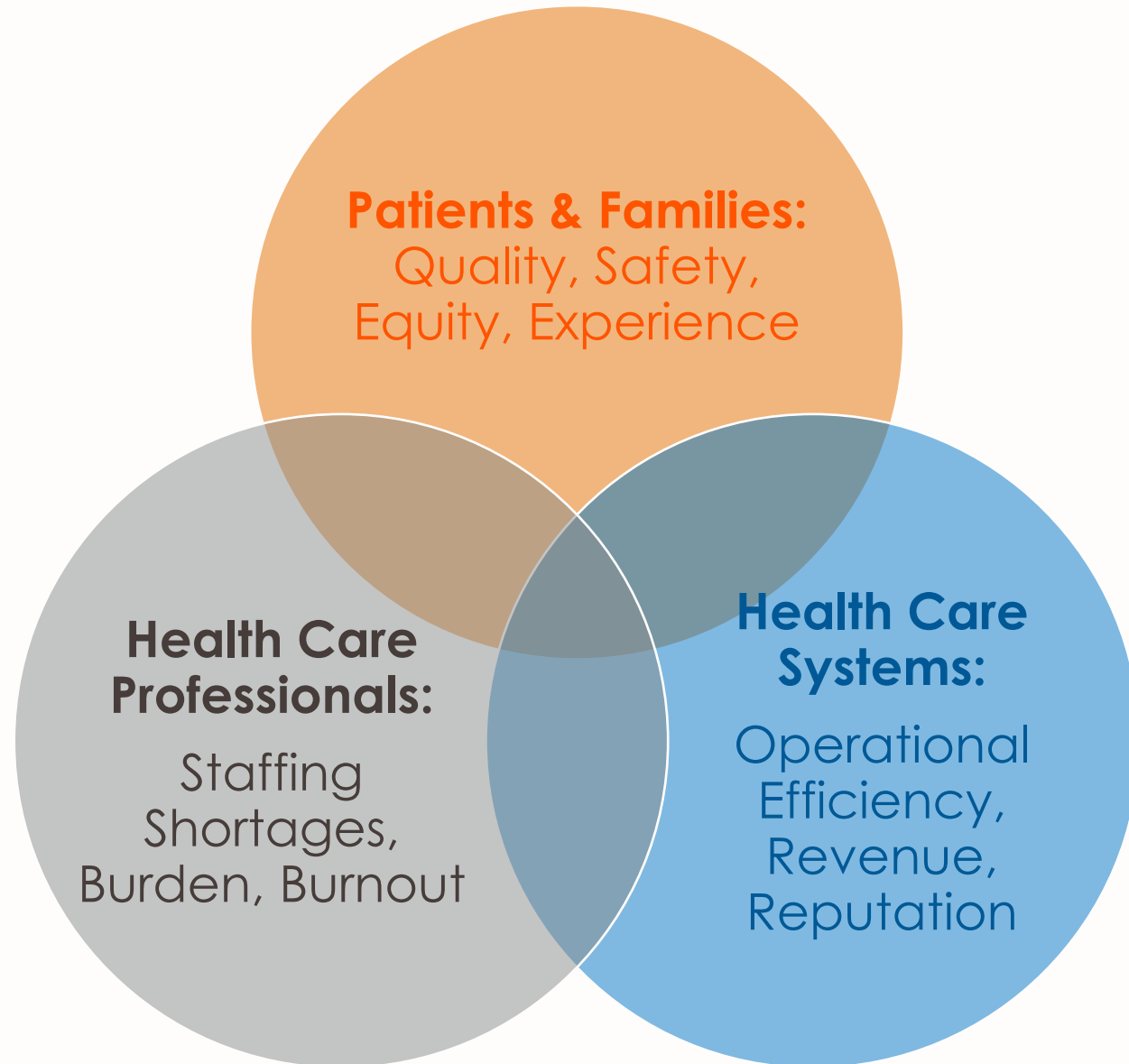
Trinity Symposium on Artificial Intelligence

October 27, 2023

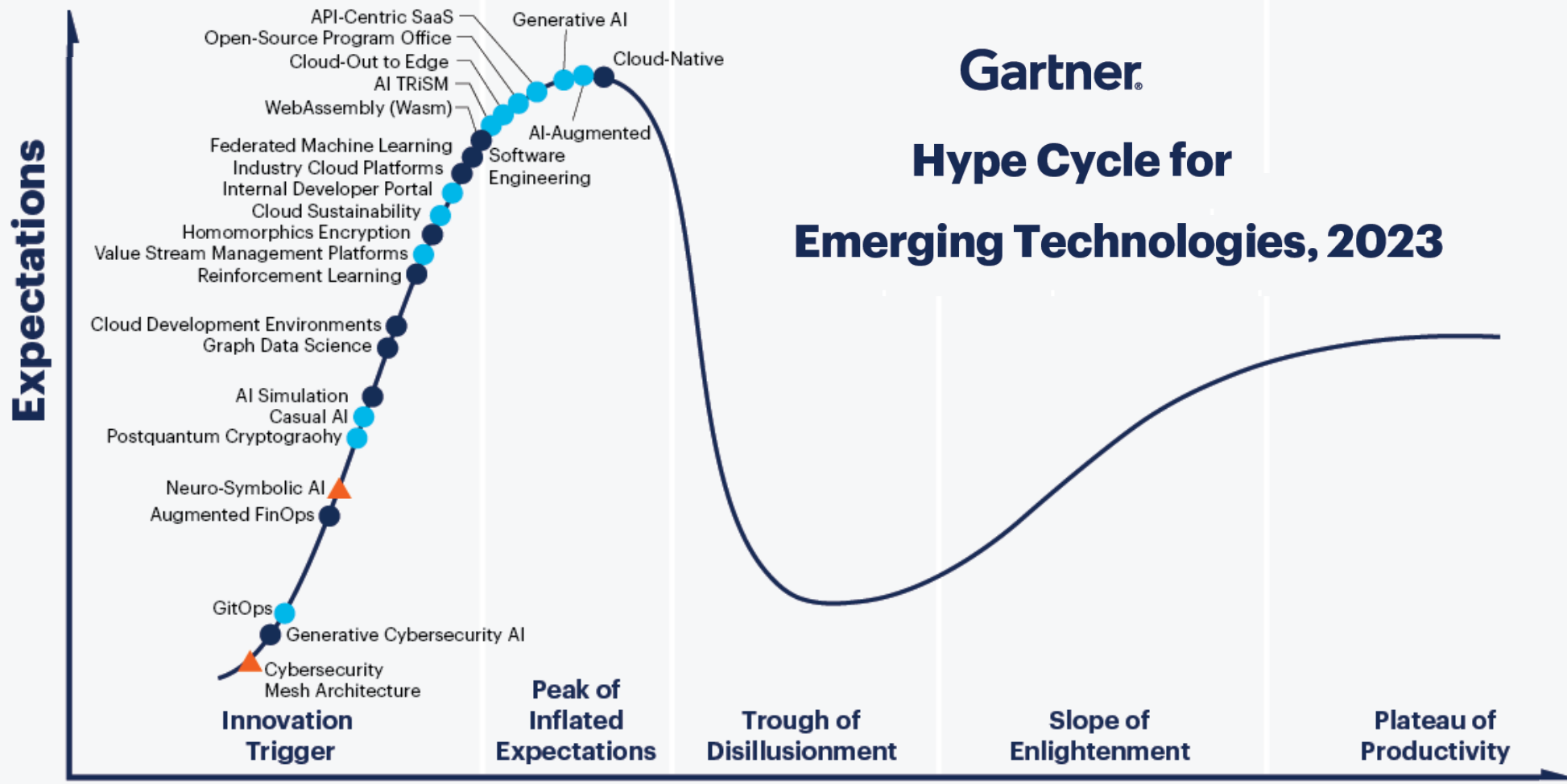
Jessica Herstek, MD | Chief Medical Informatics Officer



Applications of AI/ML in Pediatric Medicine



Gartner Hype Cycle for Emerging Technologies, 2023



Plateau will be reached:

- less than 2 years
- 2 to 5 years
- 5 to 10 years
- ▲ more than 10 years
- ⊗ obsolete before plateau

As of August 2023

Log in

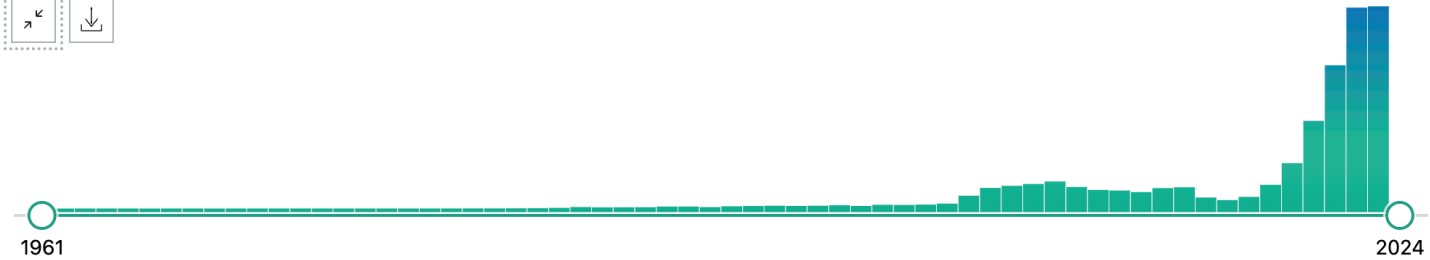
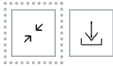


"artificial intelligence" × **Search**
[Advanced](#) [Create alert](#) [Create RSS](#) [User Guide](#)

[Save](#) [Email](#) [Send to](#) Sort by: **Most recent** ⌵ ⌵ [Display options](#) ⚙️

RESULTS BY YEAR

80,584 results



MY NCBI FILTERS 🔗

TEXT AVAILABILITY

- Abstract
- Free full text
- Full text

ARTICLE ATTRIBUTE

Diagnosis of primary clear cell carcinoma of the liver based on Faster region-based convolutional neural network.
1
Liu B, Li J, Yang X, Chen F, Zhang Y, Li H.
Cite Chin Med J (Engl). 2023 Oct 25. doi: 10.1097/CM9.0000000000002853. Online ahead of print.
Share PMID: 37882066

Peer-reviewed visuals and auditory - isn't it time to incorporate?
2
Soliman K, Thongprayoon C, Cheungpasitporn W.
Cite Ren Fail. 2023;45(2):2274507. doi: 10.1080/0886022X.2023.2274507. Epub 2023 Oct 26.

The 'Last Mile' Problem

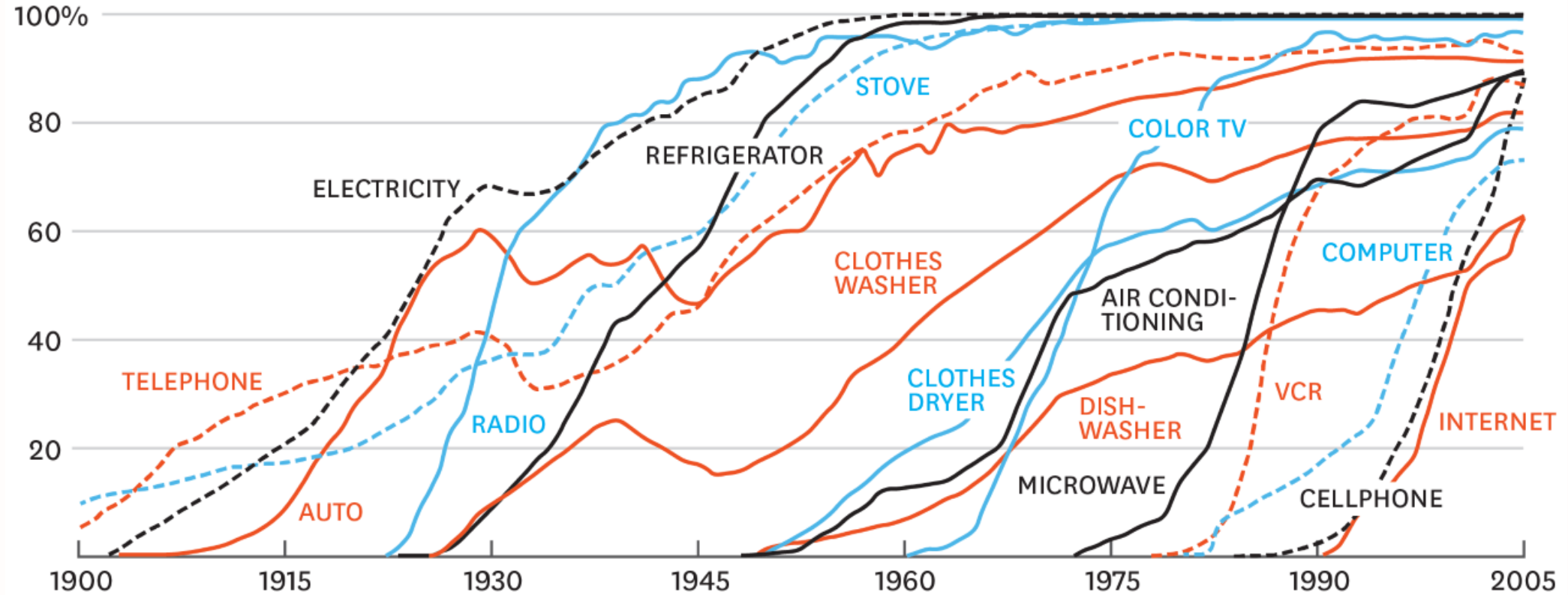


IT'S NOT ME,
IT'S YOU.



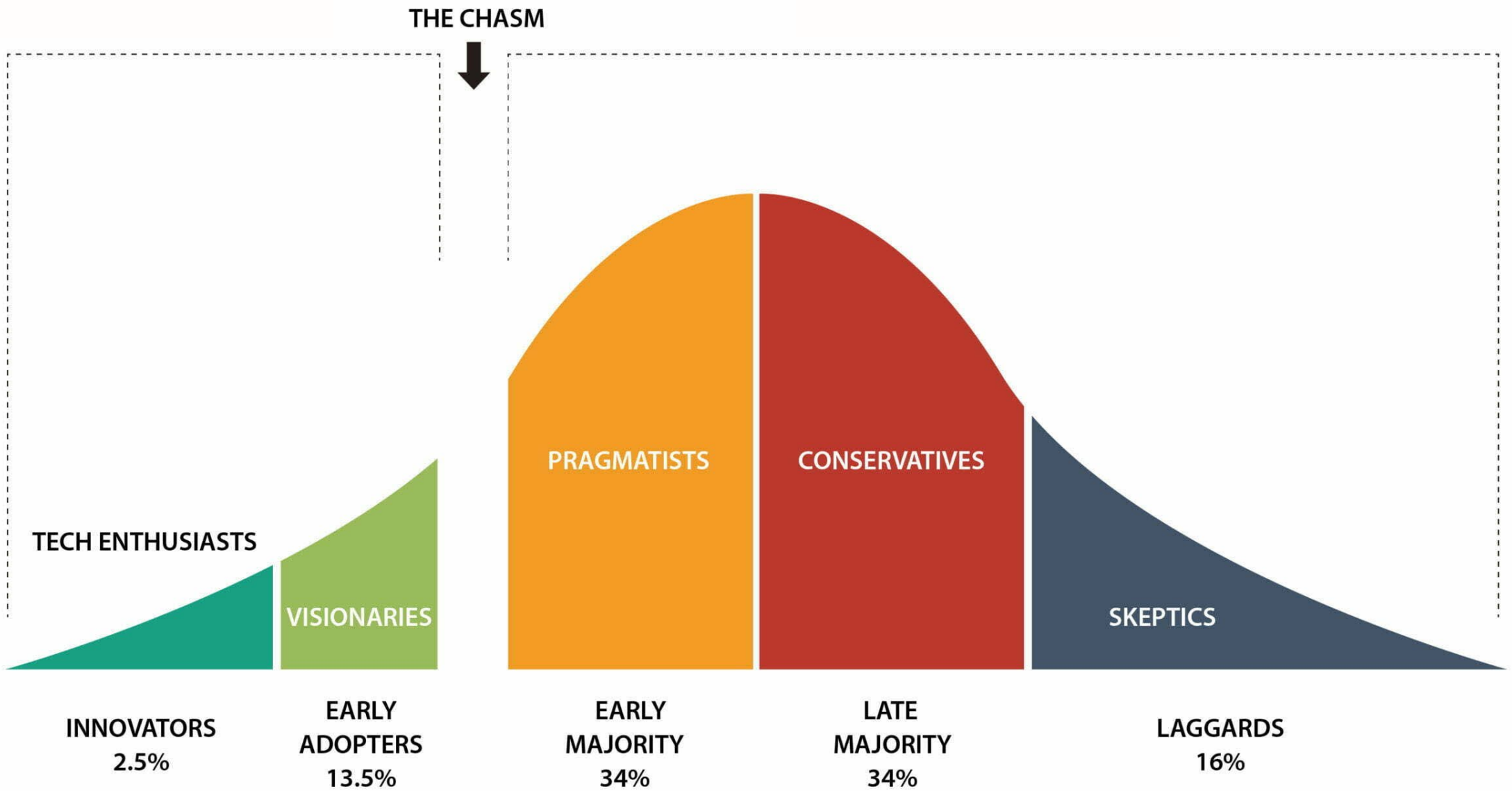
CONSUMPTION SPREADS FASTER TODAY

PERCENT OF U.S. HOUSEHOLDS



SOURCE NICHOLAS FELTON, THE NEW YORK TIMES

HBR.ORG



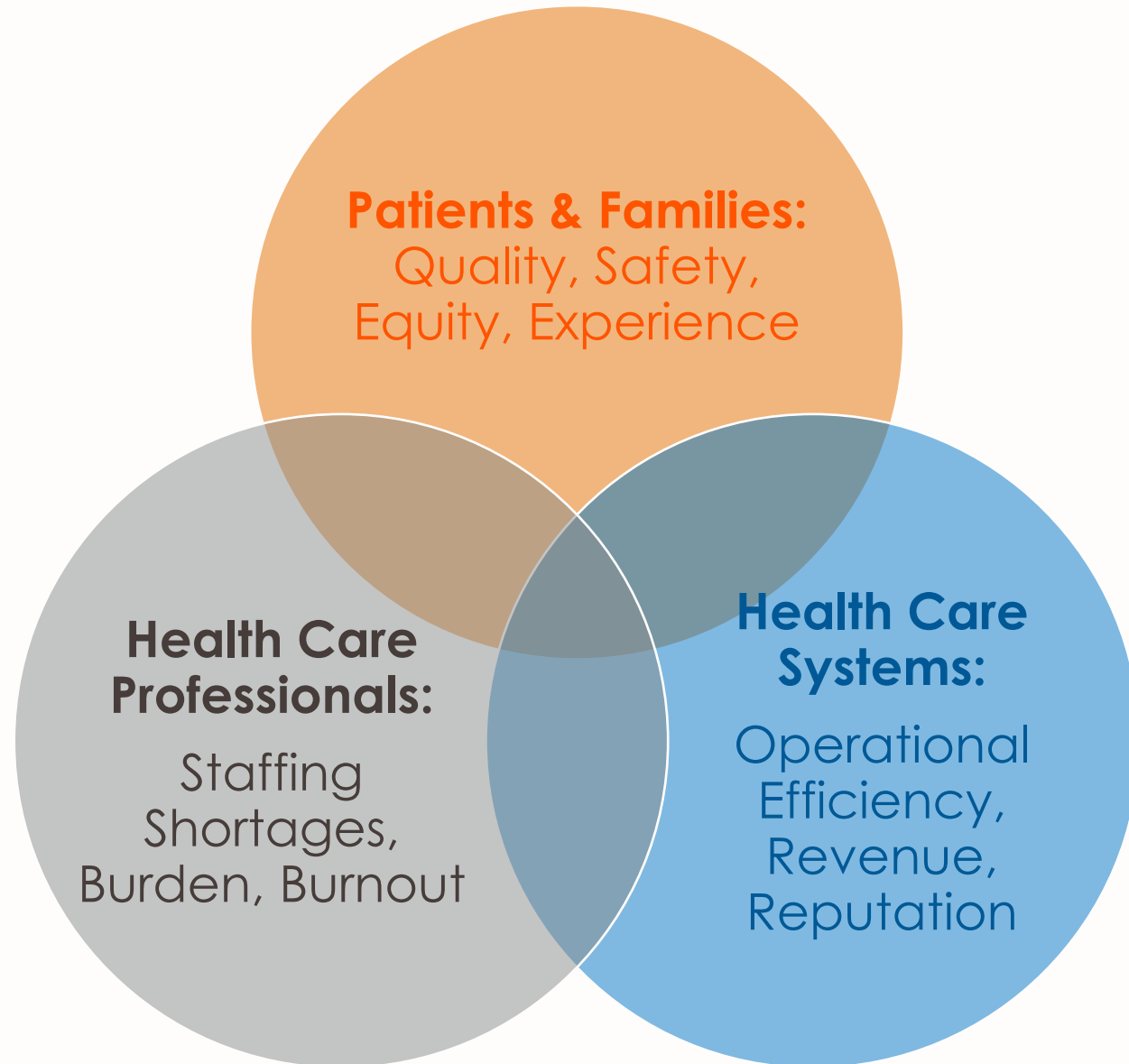


Garbage
Data



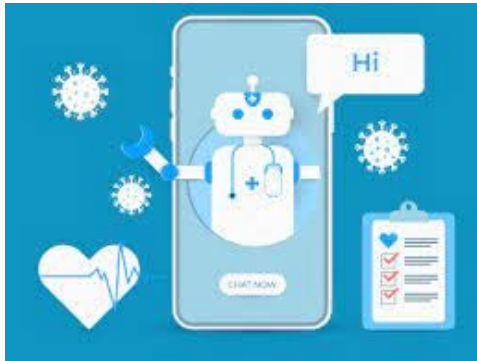
Garbage
Results





ChatGPT vs. Dr. Google





Coronavirus Self-Checker

Hi, I'm Clara. I'm here to guide you through the Coronavirus Self-Checker.

If you are experiencing a life-threatening emergency, please call 911 immediately.

This system does not replace the judgment of healthcare professionals or the performance of any clinical assessment.

To provide information on the right level of care, we are going to ask you a series of questions.

During the assessment, you can refresh the page if you need to start again

Ready? Let's get started.

Where are you located?

United States

Outside the US

CDC.Just now



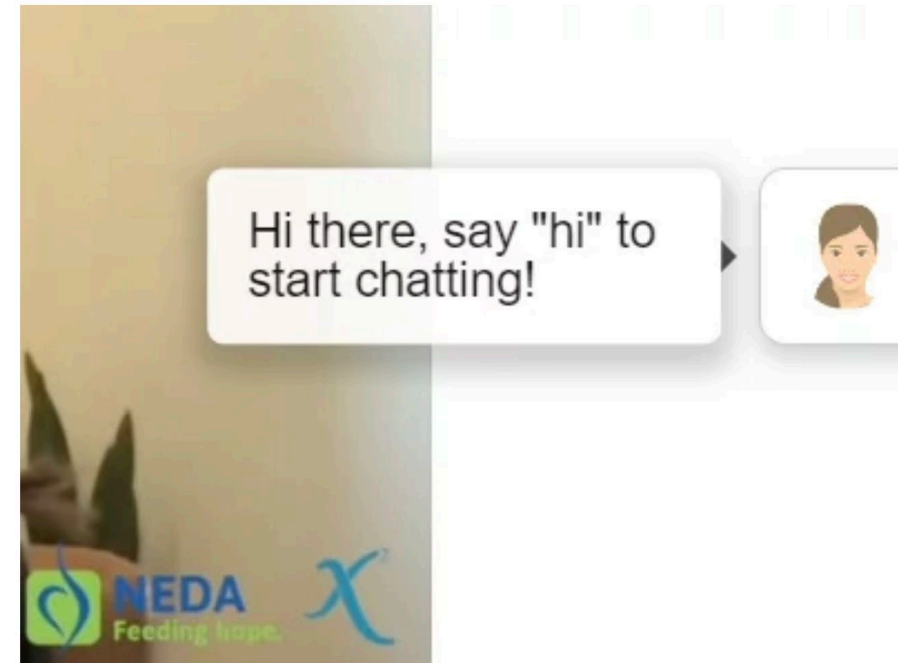
An eating disorders chatbot offered dieting advice, raising fears about AI in health

Updated June 9, 2023 · 6:59 AM ET

FROM MICHIGAN RADIO
MICHIGAN'S NPR NEWS LEADER

By Kate Wells

4-Minute Listen + PLAYLIST



Tessa was a chatbot originally designed by researchers to help prevent eating disorders. The National Eating Disorders Association had hoped Tessa would be a resource for those seeking information, but the chatbot was taken down when

Language
Equity &
Health
Literacy



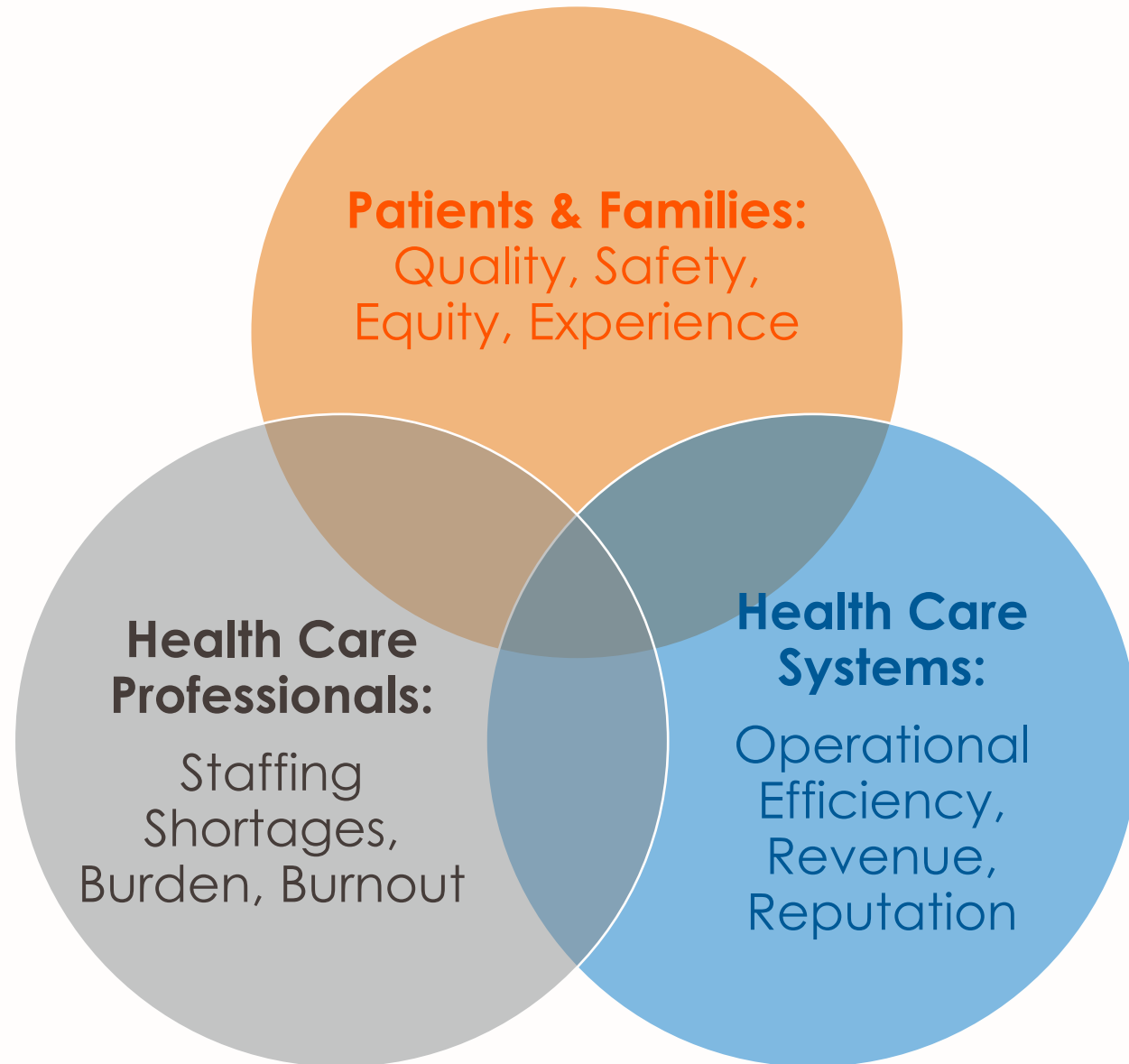
Draft Messages



Early Diagnosis







Predict Events





ARTIFICIAL INTELLIGENCE

Hundreds of AI tools have been built to catch covid. None of them helped.

Some have been used in hospitals, despite not being properly tested. But the pandemic could help make medical AI better.

By Will Douglas Heaven

July 30, 2021





Garbage
Data



Garbage
Results

Reduce
Alert
Fatigue





Generate Patient Summaries





HOSPITALS



PHYSICIANS



**HEALTHCARE
ASSOCIATION**



REGISTRIES

INTEROPERABILITY



LABORATORIES



HEALTH PLANS



EMPLOYERS



**APPLICATION
PROVIDER**



Information Overload: Drinking from a Fire Hose





TREATMENTS

AI could help doctors make better diagnoses

October 25, 2023 · 5:12 AM ET
Heard on Morning Edition
By Craig LeMoult

FROM **GBH 89.7**

3-Minute Listen + PLAYLIST [Download] [Share] [Menu]



Dr. Michael Mansour, an infectious disease specialist at Massachusetts General Hospital, is testing an AI-enhanced database he uses to help make diagnoses.
Craig LeMoult/GBH



English



 **Shots** HEALTH NEWS FROM NPR

TREATMENTS

AI could help doctors make better diagnoses

October 25, 2023 · 5:12 AM ET

Heard on Morning Edition

By Craig LeMoult

FROM  89.7

 3-Minute Listen

+ PLAYLIST



Dr. Michael Mansour, an infectious disease specialist at Massachusetts General Hospital, is testing an AI-enhanced database he uses to help make diagnoses.

Craig LeMoult/GBH



English

Why UpToDate? Product Editorial Subscription Options

Subscribe

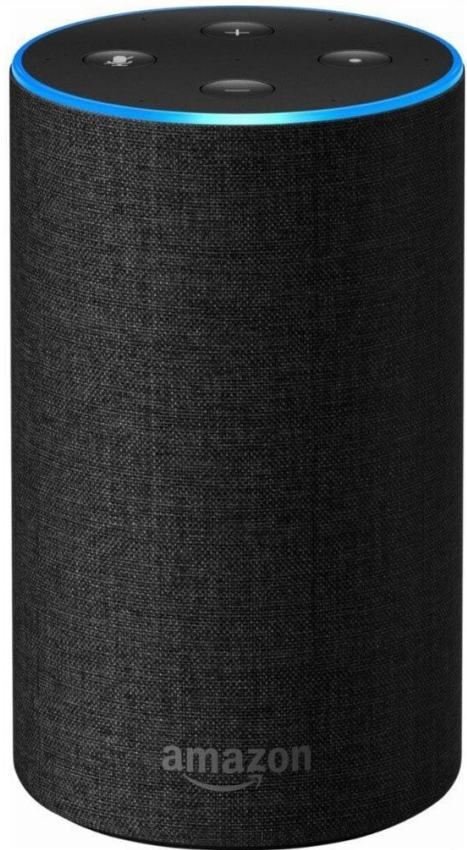
Log In

Search UpToDate



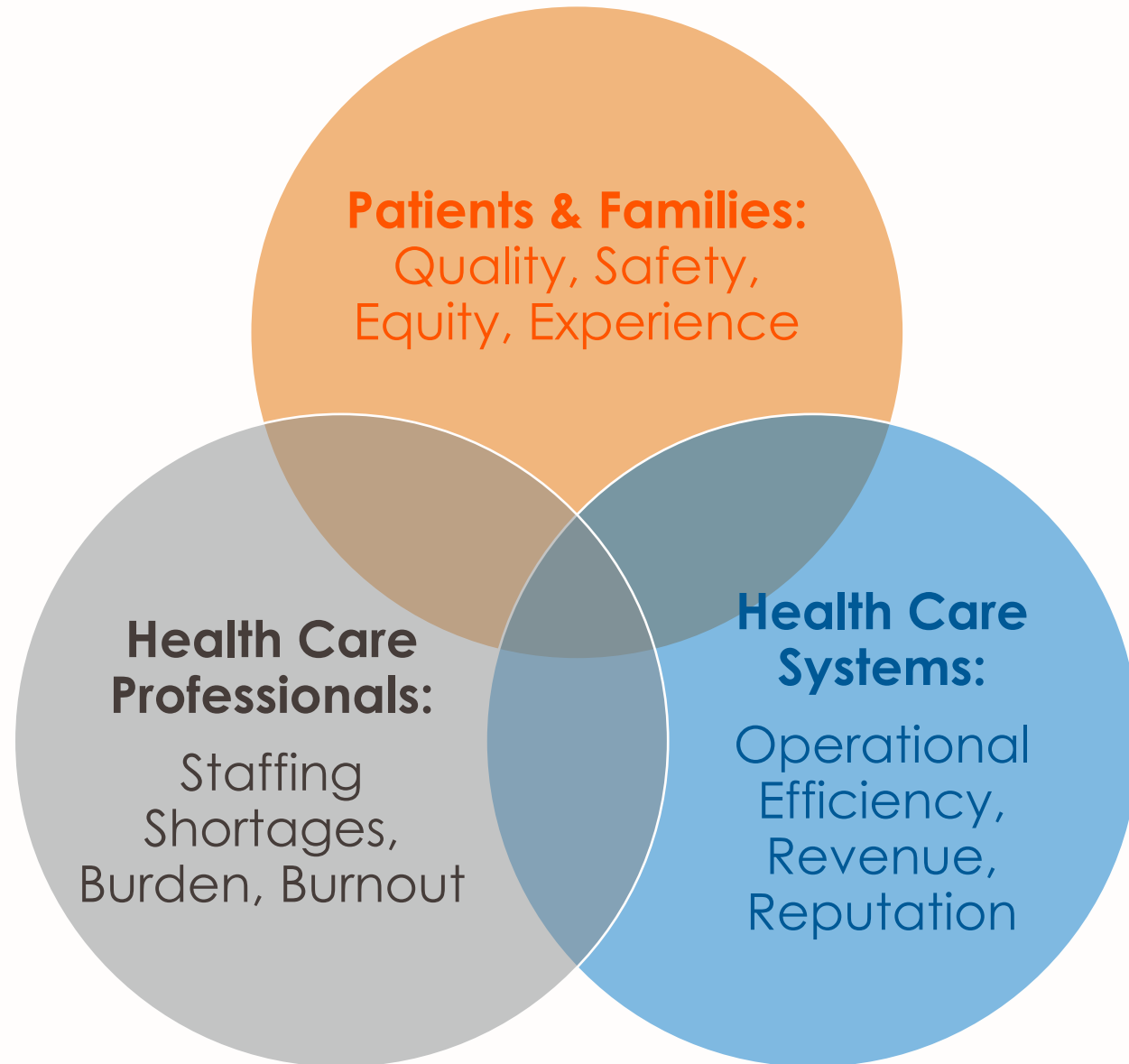
Scribe & Assistant



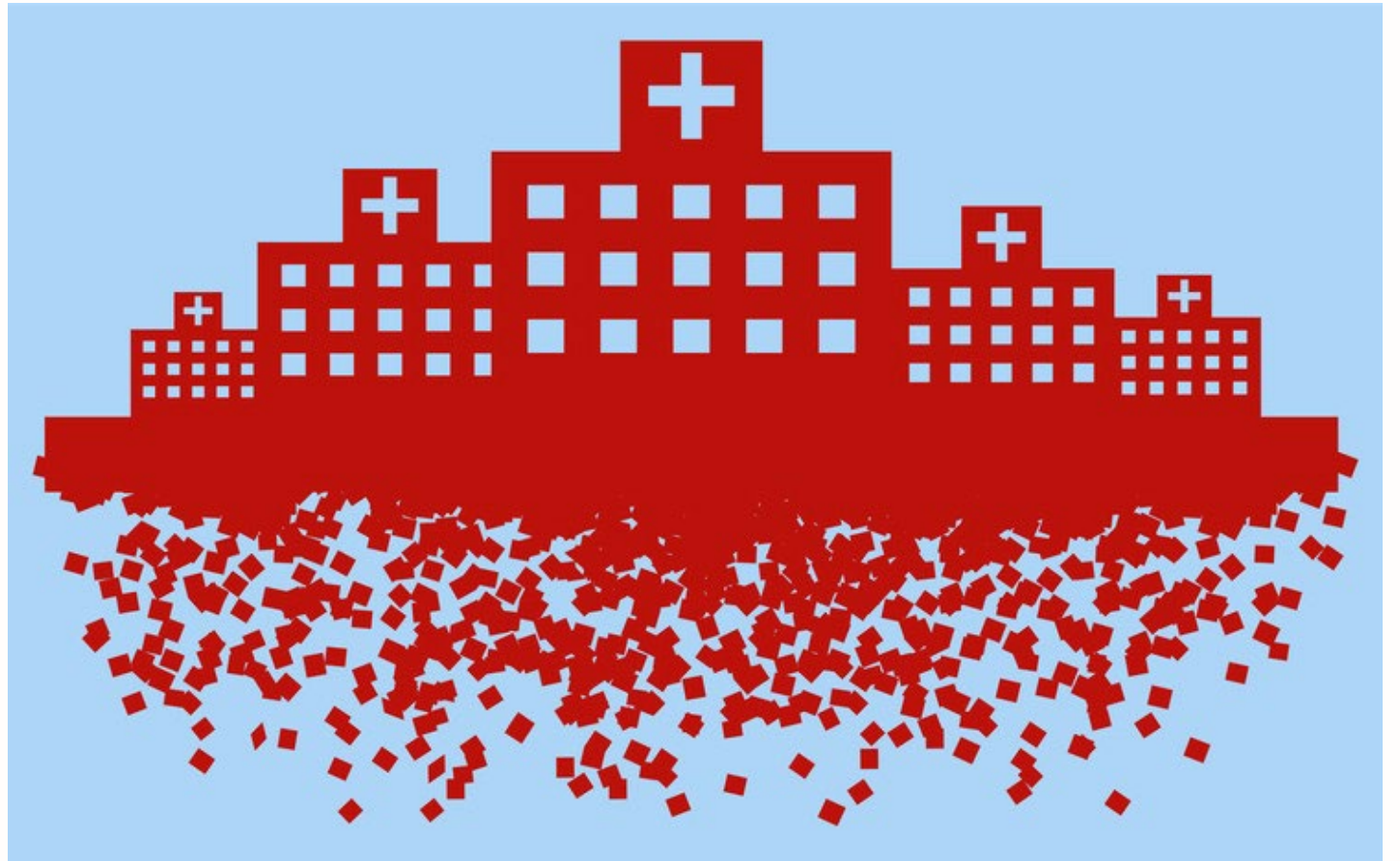


Monitor Patients





Increase
Efficiency



Cerner Command Center Dashboard with Cerner.AI

Deviceworks Hospital

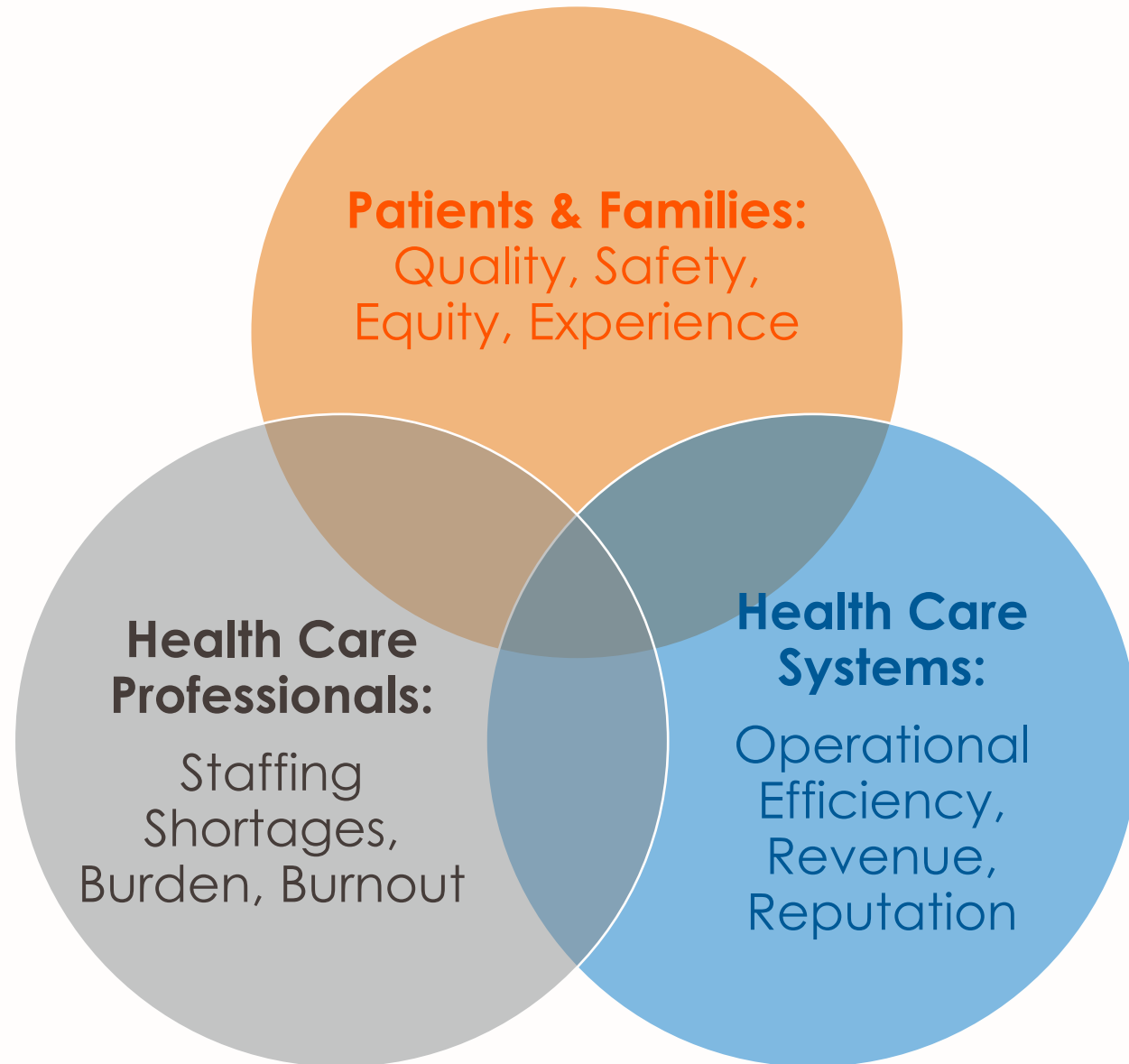


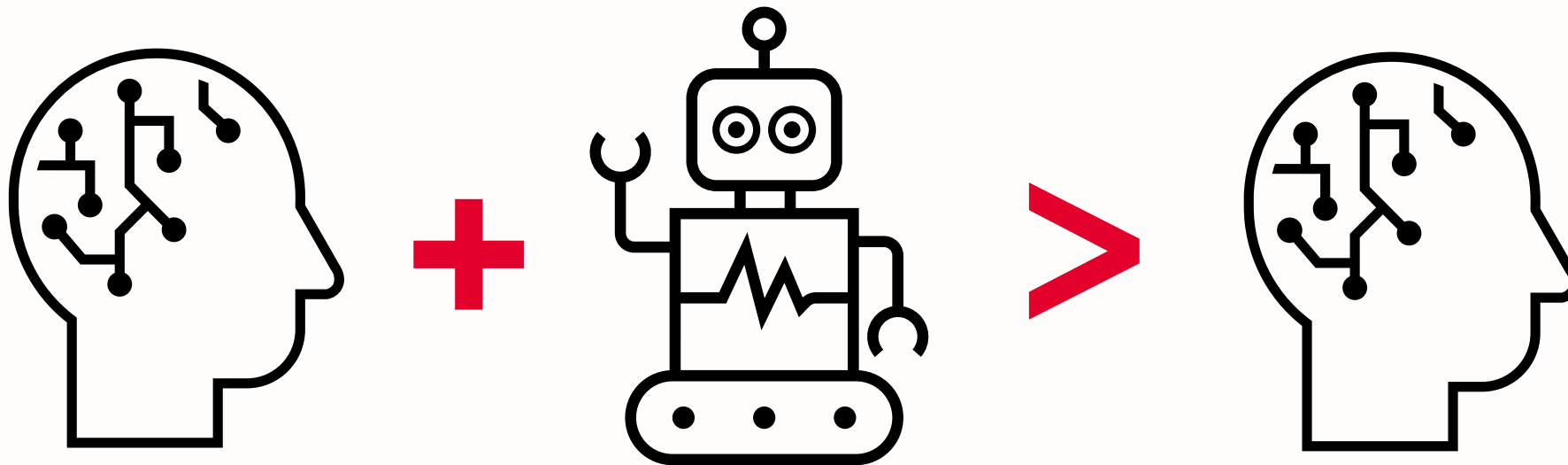
**Automate
Processes**

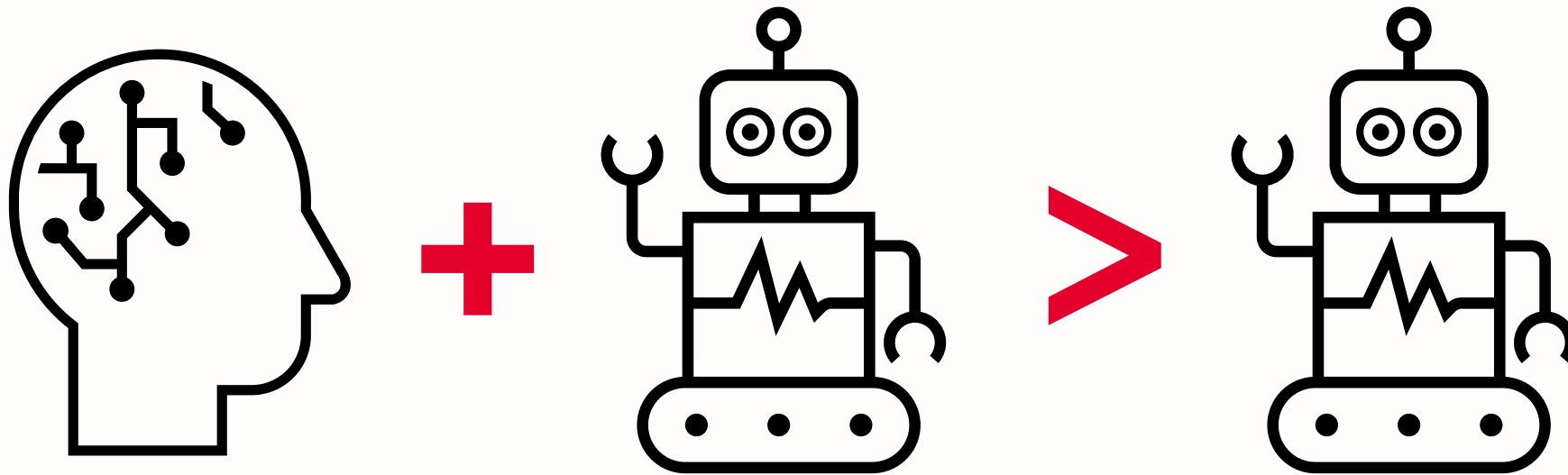


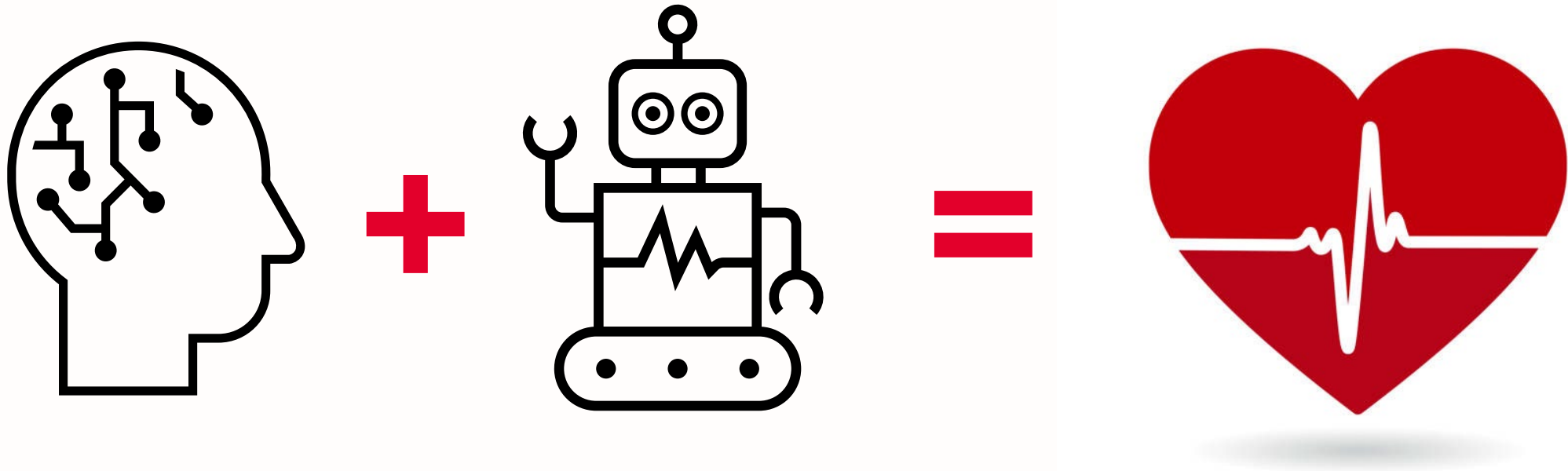
**PRIOR
AUTHORIZATION**

- _____
- _____
- _____
- _____











Thank You

